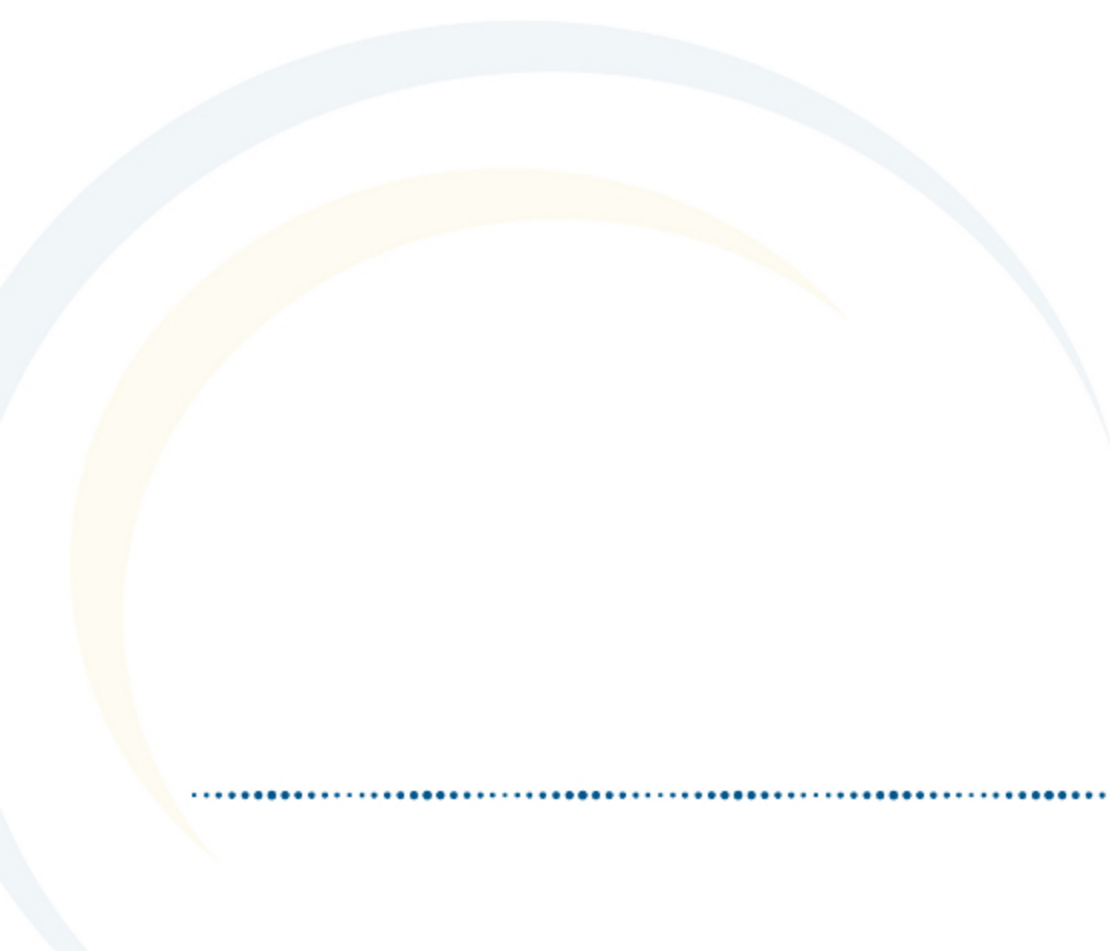


## Reports (Instruction)

---

August 2011



---

**This document is intended for restricted use only.**

**Infinite Campus asserts that this document contains proprietary information that would give our competitors undue advantage should they come into possession of any part or all of it. As such, this document cannot be publicly disclosed unless so ordered by a court of competent jurisdiction.**

©2010 Infinite Campus, Inc. All rights reserved.

INFINITE CAMPUS and Transforming K12 Education are registered trademarks of Infinite Campus, Inc. The INFINITE CAMPUS logo is a trademark of Infinite Campus, Inc. This publication, or any part thereof, may not be reproduced or transmitted in any form or any means, electronic or mechanical, including photocopying, recording, storage in an information retrieval system, or otherwise, by anyone other than Infinite Campus, Inc. without written permission of Infinite Campus, Inc., 4321 109th Avenue NE, Blaine, MN 55449, tel. (651) 631-0000, email [info@infinitecampus.com](mailto:info@infinitecampus.com).

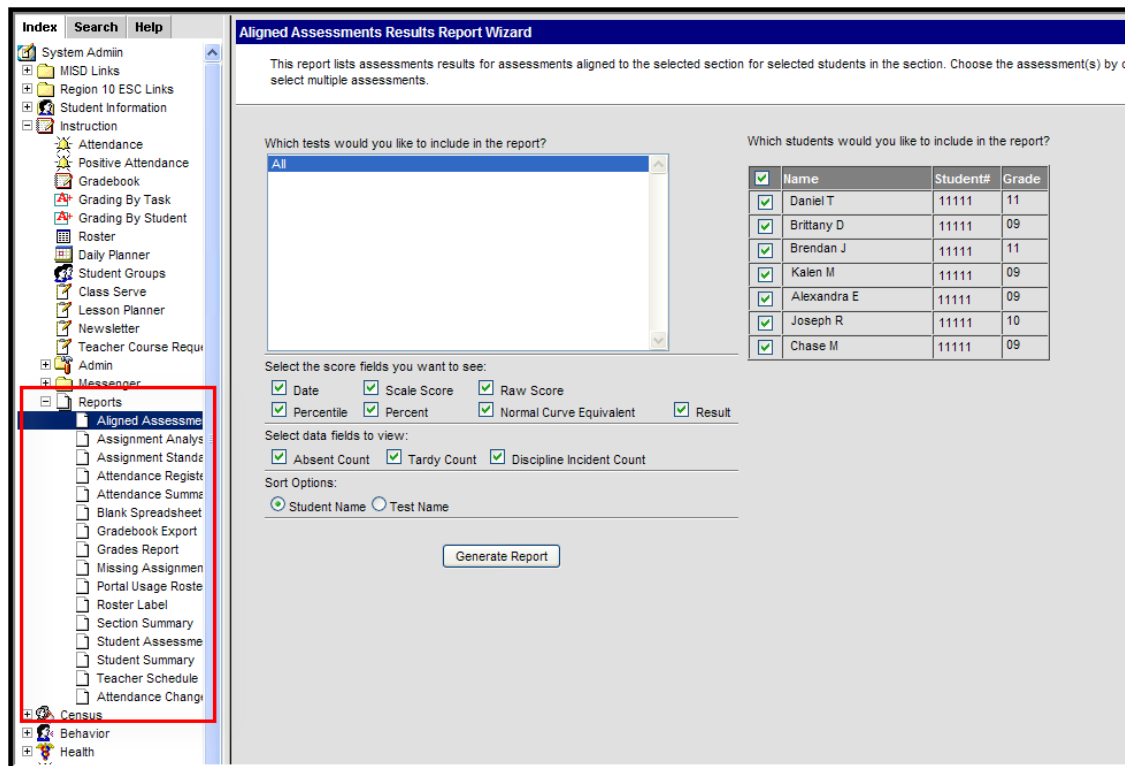
---

# Reports (Instruction)

## Overview


**PATH:** *Instruction > Reports*


The available Instruction reports use data entered into the teacher's grade book, attendance information, roster information and assessment data, among other available items.



The following reports are available in District Edition applications only:

Report	Description
<a href="#"><u>Aligned Assessments</u></a>	The Aligned Assessments Report lists assessment results for those assessments (tests) tied to a course section for selected students.
<a href="#"><u>Assignment Analysis Graph</u></a>	The Assignment Analysis Graph Report creates a bar chart representing the students' grades for the selected assignment and/or activity.
<a href="#"><u>Assignment Standards</u></a>	The Assignment Standards Report provides a list of standards associated with an assignment for the selected grading terms.
<a href="#"><u>Attendance Register</u></a>	The Attendance Register Report displays attendance data for each student for each day in a student by day grid.

<b><u>Attendance Summary</u></b>	The Attendance Summary Report displays the section attendance summary for each student.
<b><u>Blank Spreadsheet</u></b>	The Blank Spreadsheet Report creates an empty grid with selected students on the y-axis and blank column headers on the x-axis.
<b><u>Grade Book Export</u></b>	The Grade Book Export Report allows users to export Grade Book scores into other applications.
<b><u>Grades Report</u></b>	The Grades Report batch prints student grades.
<b><u>Missing Assignments</u></b>	The Missing Assignments Report displays missing assignments per student.
<b><u>Portal Usage Roster</u></b>	The Portal Usage Roster Report prints a summary of student and parent portal accounts and login activity for those students actively enrolled in the selected section.
<b><u>Roster Label</u></b>	The Roster Labels Report displays roster labels for enrolled students.
<b><u>Section Summary</u></b>	The Section Summary Report displays all selected assignments and students in a grid with students on the y-axis and assignment headers on the x-axis.
<b><u>Student Assessment Summary</u></b>	The Student Assessment Summary Report lists the students' best test results for each selected test.
<b><u>Student Summary</u></b>	The Student Summary Report displays a list of assignments per student that are assigned to the student along with any scores the student has received.
<b><u>Teacher Schedule</u></b>	The Teacher Schedule Report displays a teacher's schedule in the current calendar year.
<b><u>Attendance Change Tracking</u></b>	<p>This report displays changes to the student attendance in a course section. Each modification to a student's attendance record displays in a separate row in the report.</p> <div style="background-color: #e0ffe0; padding: 10px; border: 1px solid #c0ffc0;"> <p> This report was added in the <a href="#">E.1126 Release Pack</a>.</p> </div>

 The Instruction module and its tools are not available in State Edition applications.